



## Campaigns

### ROAD SAFETY WEEK

Too often, members and supporters injured on our roads tell us that they didn't feel their voice was heard. That's why we've campaigned to press the media to talk about crashes or collisions rather than accidents, and to make sure that road victims are treated as real victims. Every November, road safety charity Brake runs a week-long road safety campaign. This year's theme is 'After the crash – Every road victim counts'. We'll be supporting that campaign and Brake's call for greater support for road victims and their families. [brake.org.uk/road-safety-week](http://brake.org.uk/road-safety-week)

## Governance

### CYCLING UK AGM

The Cycling UK AGM was held online on Friday 27 September. Thank you to all members who attended, asked questions and voted – your engagement is appreciated. Print schedules mean that we can't show the results here but you can view them on the Cycling UK website: [cyclinguk.org/agm-2024](http://cyclinguk.org/agm-2024). Look out for more information and analysis in CycleClips.



Can't wait for Marcher Castles Way Launch? Here are 10 more off-road routes: [cyclinguk.org/article/top-ten-off-road-routes](http://cyclinguk.org/article/top-ten-off-road-routes)

## Routes

# THE MARCHER CASTLES WAY

Cycling UK's new long-distance route, the Marcher Castles Way, is launching soon. We rode the route in early September to finalise details and get photos for the accompanying guidebook.

The Marcher Castles Way is a 300km circular loop in the Shropshire Hills, taking in ancient castles, historic bridges, wild forest tracks and some of the most spectacular views on the border between England and Wales. It climbs

up and down almost 5,000 metres of wild and often rocky hillsides, and takes you along epic, exposed ridge-lines.

While it's challenging to ride, the route offers stunning views across Shropshire and Wales. It passes through beautifully preserved villages and explores an area of the world that feels forgotten and dreamy. The Stiperstones National Nature Reserve is a case in point, being blessed with a full array of stars in the night sky. It's one of the few

dark sky areas in the UK, so if you camp nearby you can see the Milky Way untainted by light pollution.

The route is a real off-the-beaten-track journey but it still offers a great selection of historic sites to visit. You'll ride past Roman ruins, see half-timbered houses, visit Norman castles and explore Neolithic monuments. There are also plenty of bakeries along the way; check out the lemon drizzle cake at the Postcard Café in Clun!

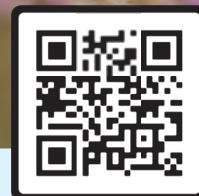
## Legacies

### MAKE A WILL FOR FREE

You can transform lives through cycling by leaving a gift in your will to Cycling UK. Our partnership with Farewill enables members like you to write your will for free.

"Leaving a gift to Cycling UK in my will is the best way to honour what cycling has given me," life member Michael Millington told us. "I want to pass on that joy to generations to come."

Ensure your wishes are acted on and create your legacy today. Scan the code (right) or visit [cyclinguk.org/giftinwills](http://cyclinguk.org/giftinwills).



Including Cycling UK in your will helps others to enjoy cycling like you have



The new route is a 300km loop in the Shropshire Hills

Far left: Julie Skelton. Left: Robyn Furtado. Below: Rob Spanning